



Mayfield Avenue, London, W4
Guide Price £2,250,000

WHITMAN & CO.

SALES · LETTINGS · COMMERCIAL



Rare to the market, this well-presented five-bedroom semi-detached period family house offers an excellent balance of living and entertaining space. Ideally located in this prestigious tree-lined residential road, close to all amenities.

The property includes five double bedrooms, two bathrooms, a large entrance hall, two reception rooms, a 20' bespoke kitchen/breakfast room, a cellar, a cloakroom, and a private 45' landscaped garden.

Situated within close proximity of Turnham Green (Tube) Station, numerous bus routes and the extensive range of shops, bars and restaurants on Chiswick High Road.



Mayfield Avenue, W4

Approximate gross internal area

200.71 sq m / 2160 sq ft

(Including Shed)

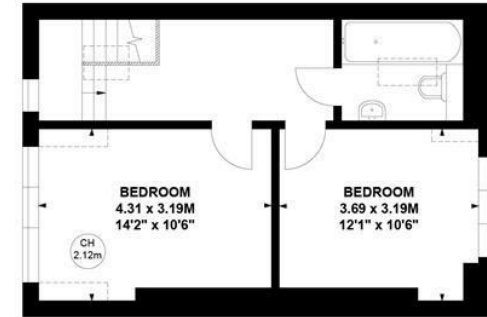
Shed : 2.91 sq m / 31 sq ft

Key :

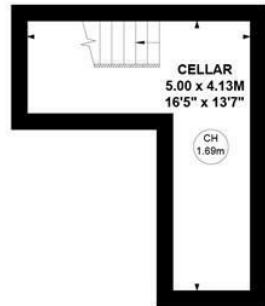
CH - Ceiling Height



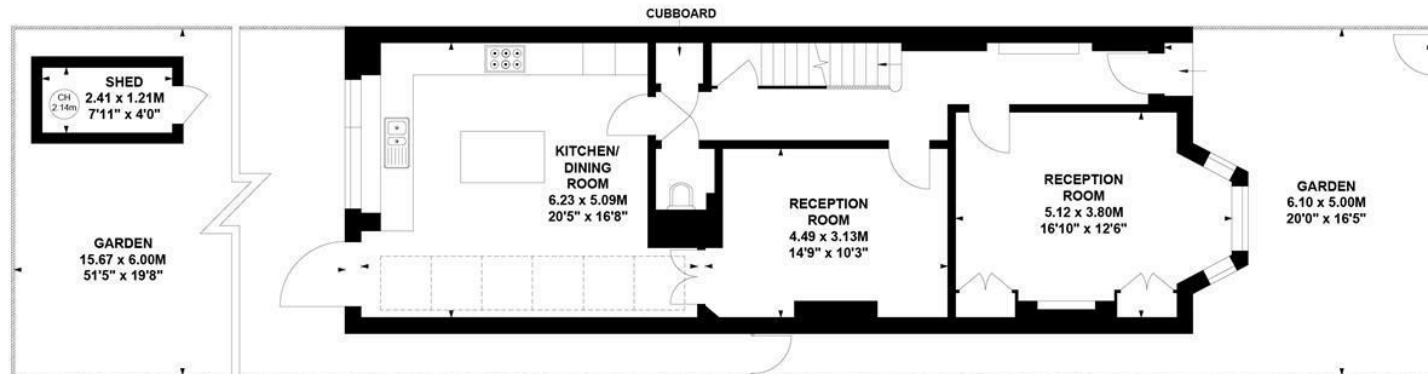
First Floor



Second Floor



Lower Ground Floor



Ground Floor

Not to scale, for guidance only and must not be relied upon as a statement of fact.

All measurements and areas are approximate only

- Period semi-detached family home
- Large entrance hall
- 20' bespoke kitchen/reception room

- Five double bedrooms/Two bathrooms
- Two reception rooms
- Private 45' landscaped garden

Tenure - Freehold
Local Authority - Hounslow
Council Tax - Band G

